

Extraction Arm NEX MD

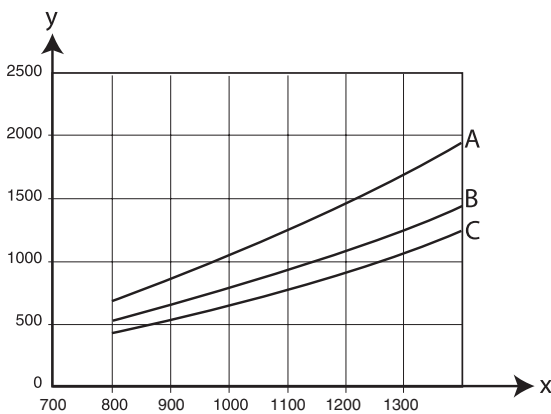


Nederman NEX MD is an extraction arm for medium to heavy duty applications. The arm has a Ø160 mm hose, which together with the external arm system provides a high air flow and a low pressure drop.

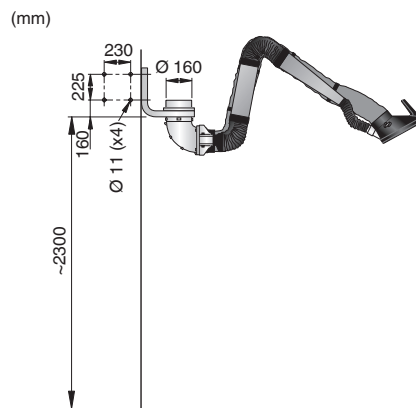


- Robust swivel - allows 360° rotation
- Perfectly balanced and simple to position
- Encapsulated support mechanism protects the arm against dust and dirt
- Can be mounted on brackets, extension arms and exhaust rails
- The design of the hood ensures very high capture capacity and low noise level
- With a damper in the hood - saves energy when not in operation
- The hose is easy to remove for cleaning
- The hood can be tilted in all directions

Pressure drop



X: airflow m³/h Y: static pressure Pa A: 5 m, B: 4 m, C: 2 m and 3 m



Description	Reach, m	Airflow, m ³ /h	Connection Ø, mm	Max. fume temperature, °C	Noise level at hood, dB(A)	Weight, kg	Part no.
NEX MD 2m	2	900-1300	160	70	66	16	10561032
NEX MD 3m	3	900-1300	160	70	63	20	10561132
NEX MD 4m	4	900-1300	160	70	63	27	10561232
NEX MD 5m	5	900-1300	160	70	63	32	10561332